

# TRANS-SPACE

MANAGING SPACE WITH OPERABLE WALLS AND DOORS



**SPACESEAL** 403 SERIES  
OPERABLE WALLS

*Proudly New Zealand owned, managed and made!*

# SPACESEAL 403 SERIES

OPERABLE WALLS

The Spaceseal 403 is a great mid-price wall in the Trans-Space range. Offering an acoustic rating of 41, it's made up of continuously hinged panels to provide a highly robust yet flexible divider for your existing space. It's ideal if you're looking for a separate area to hold meetings, make presentations or host social functions.

Capable of transforming spaces large or small, the Spaceseal 403:

- is top hung, which means no unsightly floor tracks
- comes with a pass door that can be stored in a stacking pocket
- features an aluminium trim around each panel that can be anodised or powder-coated with any standard available colour
- can be finished in your choice of fabric, vinyls, laminates, paints, whiteboards vertiface on composition... the list goes on. Just talk to us about the finish you're looking for.

When not in use, the Spaceseal 403's panels concertina either to one side of the opening (for a single wall) or either side the opening (for a paired wall). Suitable for most heights and widths up to eight metres, it's a great combination of reliable performance and easy-to-access convenience.

## Need help choosing?

For help with choosing the right wall for your project, just contact us - our technical team will be happy to recommend a model to suit.



SPACESEAL 403 SERIES

## Spaceseal 403 Series Specifications

### Panels

- Appearance similar to a permanent wall.
- Laminated internal timber framing.
- MDF skins insulated with fibreglass.
- Finish as specified (see below).
- Lead panel, pass door to be 850mm max wide.
- Intermediate panels - width 1200mm max, 600mm min.
- Aluminium trim around each panel.
- 85mm panel thickness.

### Seals

- Vertical vinyl bulb-type seals fixed to trail and lead panels.
- Vertical seals between panels are aluminium extrusion astragals with compressible acoustic foam.
- Horizontal seals at the head and floor are multi-fingered vinyl extrusions.

### Arrangement

- Stacking configurations. Single (stack at one end) or paired (stacked at both ends of the track).

### Closure

- By lead panel pass door max 850mm wide, hinged from adjacent panel or by panel the same width as the intermediate panels.

### Track

- 96 x 42 Space System II track.
- Flanged to accept ceiling tiles and installed 15mm proud of ceiling line to prevent panel seals interfering with ceiling during operation.
- Powder-coated Arctic White.
- Other colours available at an additional cost.

### Suspension

- Four ball bearing wheel sledge trolleys - one trolley on alternate panels.

### Stack space

- Depth 100mm per panel + 10mm.

### Pocket size

- If pocket required, use stack width plus 250mm.

### Hanging weight

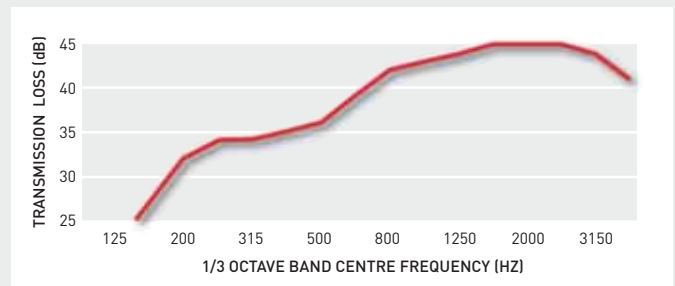
- Approximately 27kg per/m<sup>2</sup>.

### Acoustic performance

- Acoustic rating of STC 41.

### STC 41

- Transmission loss tested by Uniservices Auckland to ISO 140 parts 1, 2 & 3, ISO 717 part 1, ISO 354, AS 1191-1985, NATA Accredited. Full report available on request.



## Operation

- Top supported, centre hung, continuously hinged.
- Manually operated by recessed pulls.

## Finishes (as specified)

- Any commercially available finish - fabric, sheet or roll-up material to 12mm thick, limited only by practicality. Includes timber veneers, vinyls, laminates, paints, whiteboards, pinboards, chalkboards, projection screens or a combination of fabric and timber.
- Aluminium trim powder-coated to any standard available colour.
- Anodised trim available.

## Required measurements

- Detailed opening measure required on a Trans-Space measure sheet before manufacturing begins. (Trans-Space will complete a site measure.)
- Typical opening measurements required:
  - Width at top and bottom
  - Height at 1m intervals across opening
  - Head detail
  - Floor covering detail
  - Closure detail, including door swing direction
  - Stack end
- If stacking in a pocket, ask Trans-Space for requirements.

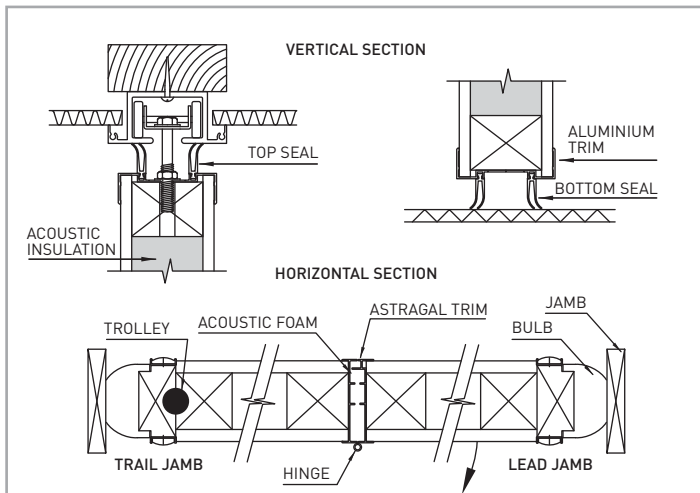
## Installation

- By manufacturer's approved installers only.

## Work by others

- All headworks required to support track. Deflection of head under load to be less than 5mm.
- Jambs to be installed straight and plumb. Tolerance 5mm from plumb.
- Baffle over opening to ensure no flanking paths for sound transmission.
- Smooth, straight, level floor.

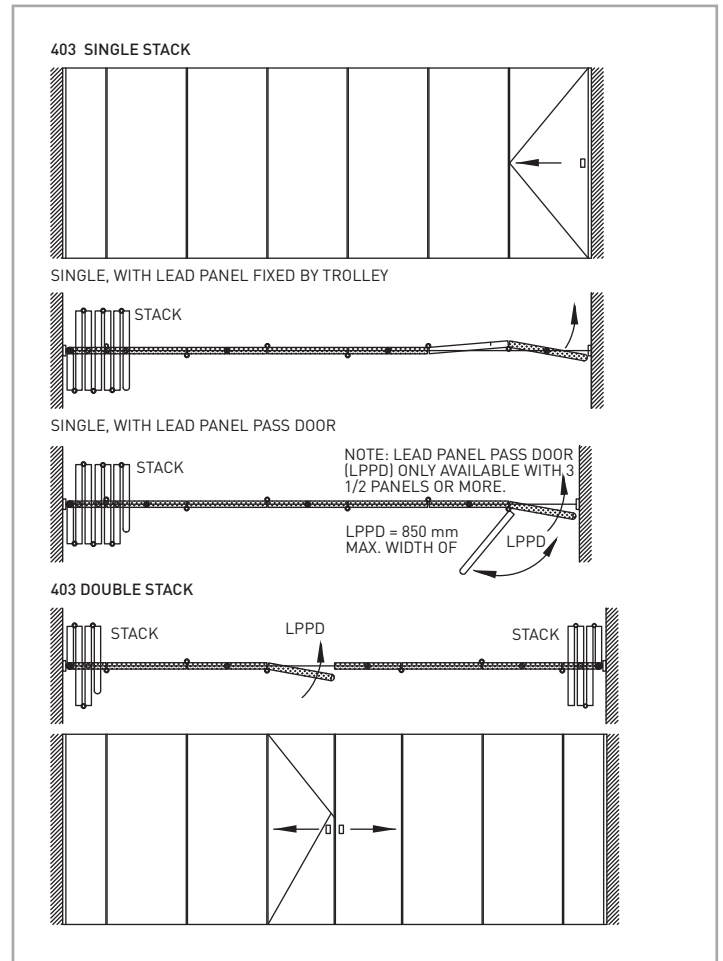
## Door section



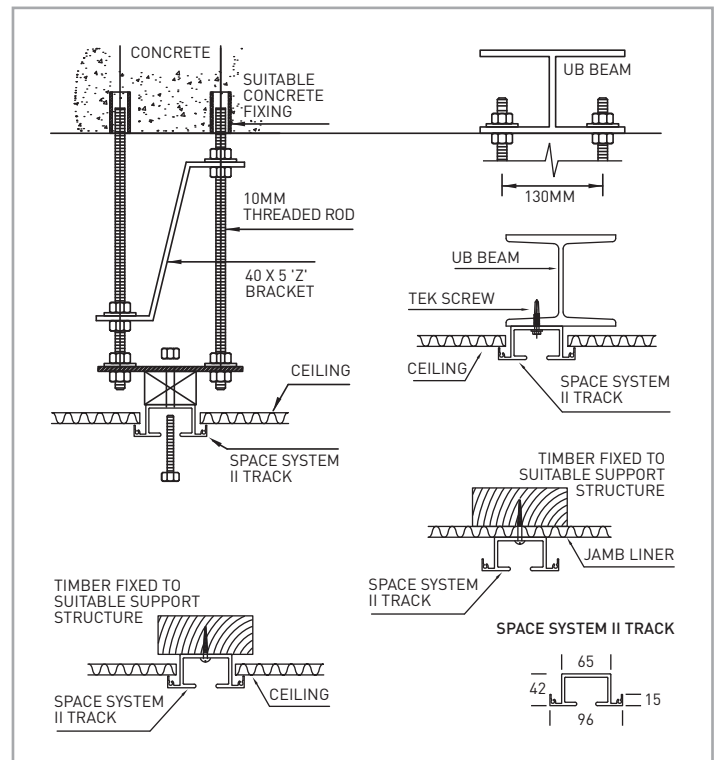
## Note

These and other detailed drawings are available as .dwg files and can be downloaded from [www.trans-space.co.nz](http://www.trans-space.co.nz). If your requirements are not represented by any of the drawings here, please contact one of our technical experts on 09 274 4089.

## Typical 403 layout options



## Typical head fixing options





If you're looking for the best in moveable wall solutions, you've come to the right place. Offering a record of more than 60 years' performance in New Zealand, the Trans-Space team has the knowledge, the experience and the expertise to match your requirements to the finest detail.

### Tailored products...

Proudly Kiwi owned and operated, Trans Space designs, builds and installs moveable walls and folding doors for every purpose - for businesses, homes, retail stores, schools, hotels, leisure facilities, conference venues, hospitals, rest homes... you name it, we've probably done it.

Every operable wall is tailor-made for its location, its purpose and its users - and it's designed to last, with top-quality fittings, finishes and other raw materials sourced right here in New Zealand.

### World-class standards...

You can rely on Trans-Space for quality. Accredited to ISO 9001, we operate stringent quality control systems to ensure world-class products at competitive prices. Every wall and door we produce has a 12-month warranty.

We're also committed to innovation, with a product development programme focused on exploring new ideas, creating new solutions and delivering better performance in every product we make.

### Service excellence...

Trans-Space has a reputation for service excellence. We'll work the way you want to work - with personal visits, in-depth product knowledge and on-site technical expertise and advice. Wherever your project and whatever your specifications, we'll be delighted to help.

### Just talk to us

For more information on Trans-Space and our products:

- online [www.trans-space.co.nz](http://www.trans-space.co.nz)
- phone us on 09 274 4089
- send an email to [info@trans-space.co.nz](mailto:info@trans-space.co.nz)
- fax us on 09 274 7058
- visit us at 12 Lovegrove Crescent, Otara, Auckland
- write to us at PO Box 58070, Botany, Auckland 2163.

We look forward to hearing from you!

walls  
that **work**



# TRANS-SPACE

MANAGING SPACE WITH OPERABLE WALLS AND DOORS

T: +64 9 274 4089  
F: +64 9 274 7058  
E: [info@trans-space.co.nz](mailto:info@trans-space.co.nz)  
W: [www.trans-space.co.nz](http://www.trans-space.co.nz)

12 Lovegrove Crescent, Otara  
PO Box 58070  
Botany, Auckland 2163  
New Zealand

*Proudly New Zealand owned, managed and made!*

ISO 9001 CERTIFIED